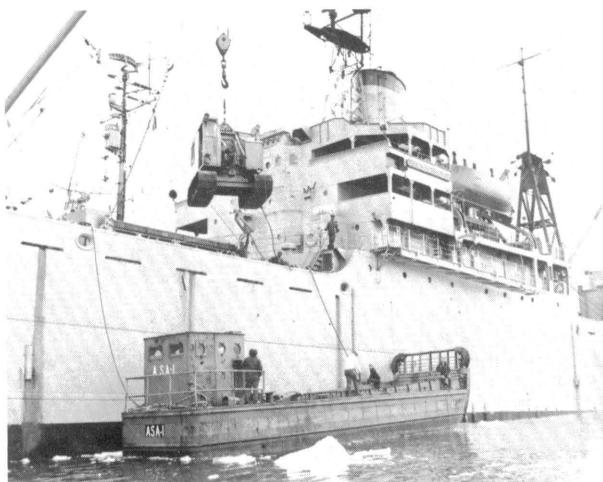


Small Boat Operations

The phrase "supported by ship's boats" in an order or final report may understate the activity involved, as indicated by this summary of *Westwind's* small boat operations during *Deep Freeze 67*:



(U.S. Coast Guard Photo)

A crane is lowered from Wyandot onto an LCM.

Sorties by Westwind's boats during Deep Freeze 67

Type of Sortie	Number of Sorties	Time Under Way (hours)	Distance Covered (nautical miles)
Construction site support	313	123.2	230.4
Palmer Station support	216	180.6	349.7
Cargo to construction site	69	54.8	93.4
Cargo to Palmer Station	24	25.3	39.3
Scientific support	32	123.2	524.8
Diving support	7	18.0	20.0
Miscellaneous*	143	90.1	316.2
Totals:	804	615.2	1,573.8

* Some of these sorties were not made in the Arthur Harbor area.

In addition to the sorties made by *Westwind's* boats in the Arthur Harbor area, an LCM carried aboard *Wyandot* made 76 trips in the harbor to discharge cargo. Counting these, well over 700 sorties were made there by the boats of *Westwind* and *Wyandot*, making Arthur Harbor a rather busy place.