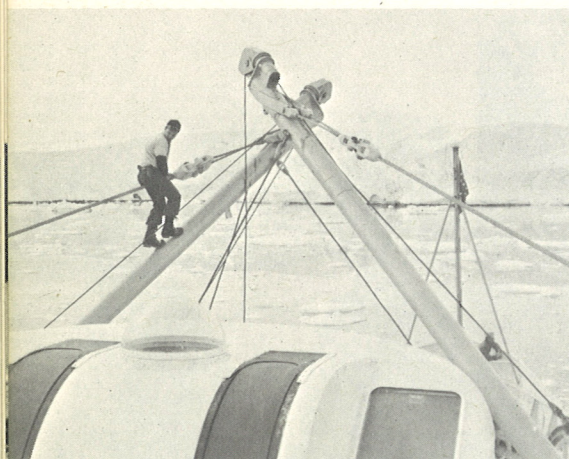


Anvers Island



Just after midnight on the 13th, we picked up our first iceberg at 61°20' S. The ice became heavier and by the next afternoon we were steaming through 5/10 coverage pack ice.

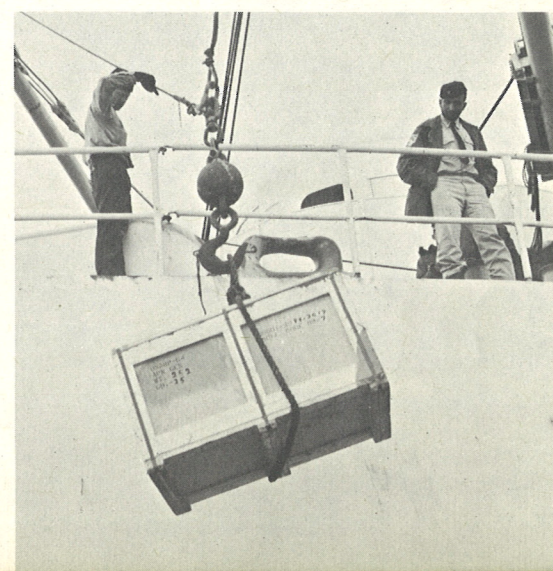
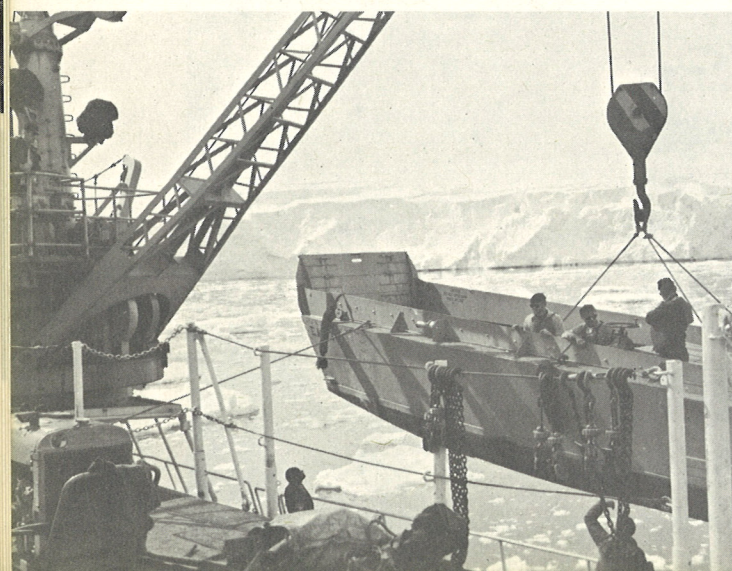
By 2200 we were within 5 miles of Arthur Harbor, our destination on Anvers Island. However, heavy ice and low visibility made further progress unwise and we spent that night in a nearby anchorage.

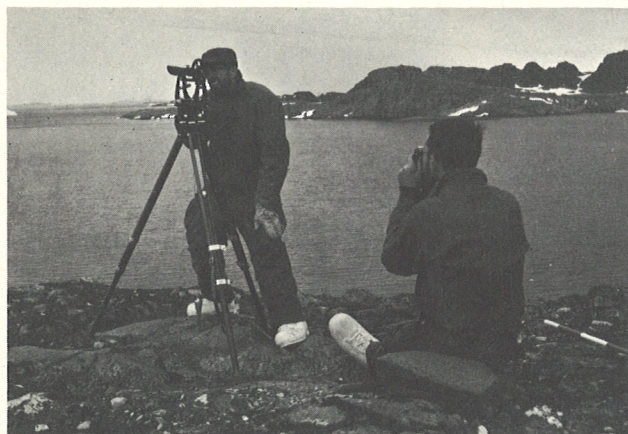
On the 14th, as we approached Arthur Harbor again, *HMS Protector* appeared and requested an escort to Argentine Island. The escort was set up for the next day and *Eastwind* continued on into Arthur Harbor. Thus began two weeks of around-the-clock work so that *Eastwind* could complete the assigned duties and be ready to sail by the 27th.

The first task was to off-load the cargo and to set up the survey team, consisting of the four members of Mobile Construction Battalion Eight (*MCB-8*) and several members of *Eastwind's* crew, in the British Hut. This was accomplished by working through the night. Part of the ships' force, led by Chief Cordock, laid down the foundation for the Jamesway Hut on Bonaparte Point. By 1000 the next morning, with the survey team camped in the British Hut, we were underway to escort *Protector* to Argentine Island and to carry out the first of Observer Team A's inspections.

Observer Team A was to inspect six stations under the Antarctic Treaty; two Argentine, two Chilean, and two British, within the Palmer Archipelago. Observer Team B, carrying out a similar mission, was working in the area of McMurdo Sound. British Base Fox, the destination of *Protector*, was also the first of the stations to be inspected.

However, *Protector*, following in our wake, found the ice too heavy for the thin skin of her hull. We escorted her to open water and took some needed medical supplies on board to be delivered by the Observer Team. *Eastwind* stayed in Gerlache Strait that night to await moderating weather.





MCB-8 Survey Team at work with a transit and camera.

The next morning we were turned back again by a whiteout. Finally the weather cleared long enough to send the Observer Team off in the "Horse".

With the inspection satisfactorily completed, *Eastwind* returned to Arthur Harbor. Here we continued our mission of supporting the Survey Team, building the Jamesway Hut and, in addition, we began a hydrographic survey of areas of the harbor where soundings were scant, coordinated with the topographical survey being carried out ashore.

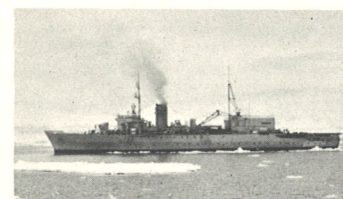
Throughout our work on Anvers Island and generally, throughout the cruise, Helicopter Utility Squadron (Hutron 4) helped *Eastwind* perform her mission by being ready to fly even in adverse conditions.



Chief Cordock's monument.

The "Airdales" transported personnel, air-lifted vital supplies, and, in all ways lived up to their "utility" designation. Survey of the airstrip atop the glacier was impeded by frequent whiteouts, but enough was learned to prove the project feasible.

On January 18, under the combined supervision of Chief Cordock and Mr. Crowell, the Jamesway Hut was completed. Then, on the morning of the 20th, we temporarily discontinued the hydrographic survey and, bidding the Survey Team farewell again, *Eastwind* departed for the inspection tour of the remaining five stations.



H.M.S. Protector

The helicopter from Protector comes aboard.

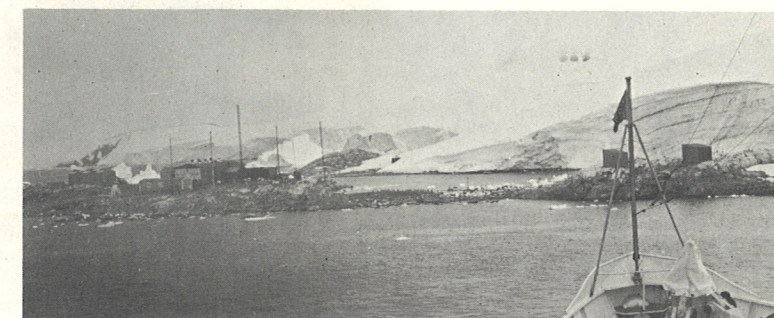


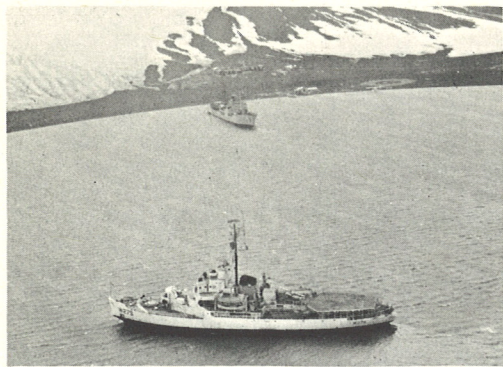
Inspection Team



The Inspection Team: Mr. Hawkins, Dr. Rathjens, and Dr. Buckley.

The Chilean Gonzales Videla Station in Paradise Harbor.



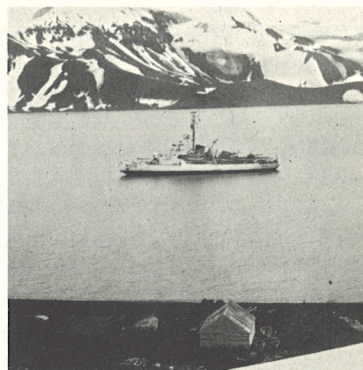


The Chilean Station, Aguirre Cerda, at Deception Island.

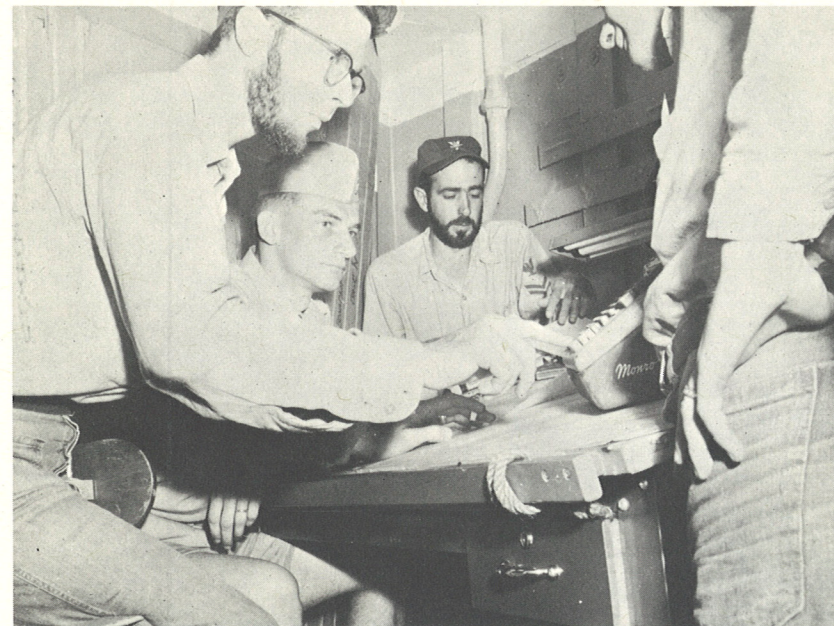


Anchored in Whalers' Bay.

British Station "B" in Whalers' Bay.



Johnson CS3 baking bread.

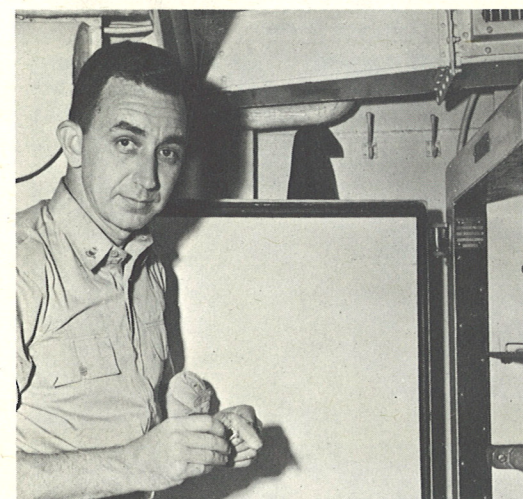


MCB-8 data processing shack.

Deep concentration on the ship's pinochle tournament.



A midnight snack.

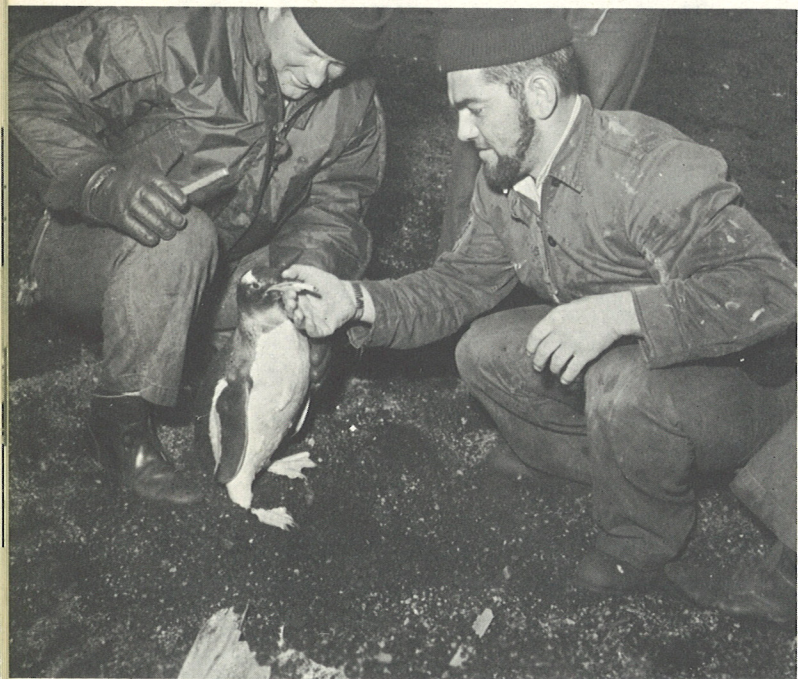


The "Boot Chief".

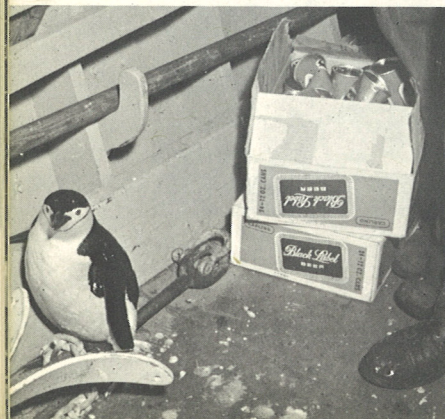




The original Adelie model for "Penguin Tracks."



7 out of 10 Gentoo Penguins prefer Camels to Ducharme.



A Chinstrap stowaway on the LCVP.

Before we weighed anchor to leave for the inspection tour we had a "house warming" party for the Jamesway Hut on Bonaparte Point. Each man received a ration of three cans of beer when he got ashore and, in this way, Antarctica—at least the part we visited—was observed in a little more relaxed manner. Men who hadn't gotten ashore yet got to climb among the rocks and observe the penguins, the petrels, and the skua gulls more closely.

On the evening of January 20 we anchored in Paradise Harbor off Chilean Gonzales Videla Station awaiting daylight. The Observer Team inspected the next day and by noon we were on our way to Deception Island.

Deception Island is a rather unique work of nature; it's an extinct volcano with a break in the crater wall which makes an ideal harbor. It has a history dating back to the early days of the whaling industry in Antarctica. The beaches are strewn with bleached whale bones and the harbor entrance is permanently guarded by a small whale chaser which ran aground some twenty-odd years ago.

We spent two very interesting days here. The Observer Team visited the Chilean station Aguirre Cerdo, the Argentine station Deception, and the British station "B". On the afternoon of the 23rd the ship was again able to send off "exploring parties". So, Whalers' Bay got a good looking-over by the men of *Eastwind*.

That evening we weighed anchor, richer for our experiences at this old whaling harbor, and set a course for Hope Bay.

At Hope Bay the Observer Team visited Argentine station Esperanza, the last of the six. Then at noon on the 25th, we entered Arthur Harbor for the last time. During that day and the next we finished up the hydro and topo surveys, transferred excess supplies to the Jamesway Hut, picked up the Survey Team, and held a farewell beer party for the local penguin rookery and invited guests on Bonaparte Point.

Then at 1800 on the 27th we weighed anchor enroute Punta Arenas.



Trying to relight Deception Island's volcano.



Jamesway Hut housewarming, or, sing along with French.

Hardy explorers conquering Antarctica.

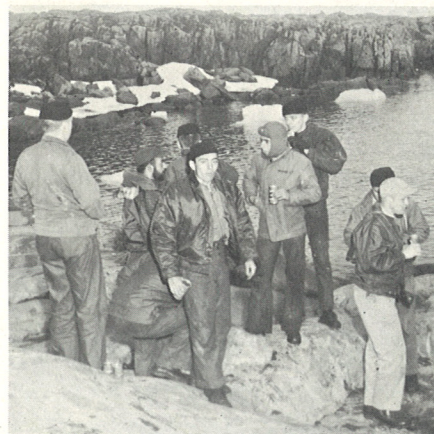




Indignant Chinstrap.



"I've got it!"



Flanagan's Marauders.



Stough makes a friend.



Fenway Park, south.



The dog from British Base "B" is content with his new-found companions. Later, they chased penguins together.



Family scene.



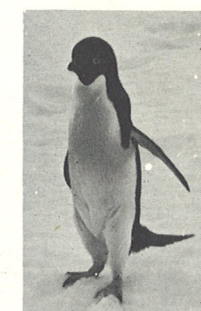
Sidewalk Superintendents.



Swapping sea stories.



Hippity — hop.



"Just dropped by to say Hello!"



A temporary mascot.

